

SUPERIOR DOCKS
435 CENTRAL ROAD, LENO
ELIZABETH, ALABAMA 36611
PHONE: 205-684-2121
FAX: 205-684-2122
WWW.SUPERIORDOCKS.COM

REVISION

1	AS SHOWN
2	AS SHOWN
3	AS SHOWN
4	AS SHOWN
5	AS SHOWN
6	AS SHOWN
7	AS SHOWN
8	AS SHOWN
9	AS SHOWN
10	AS SHOWN

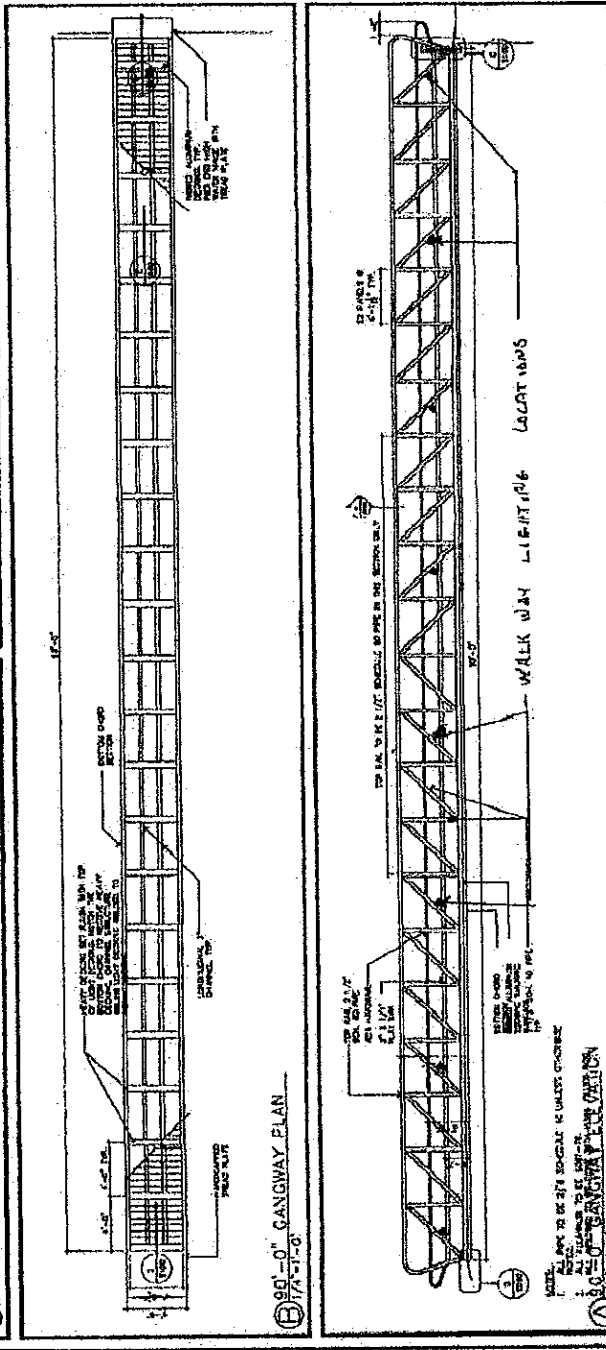
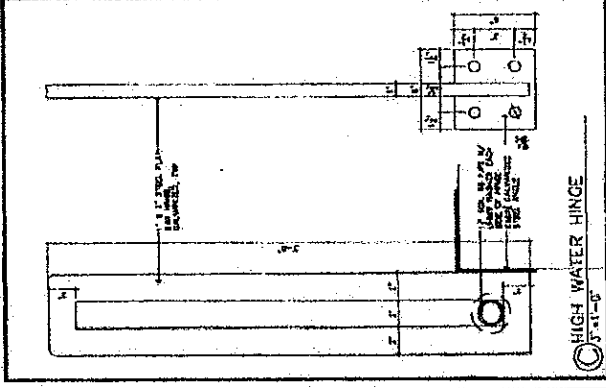
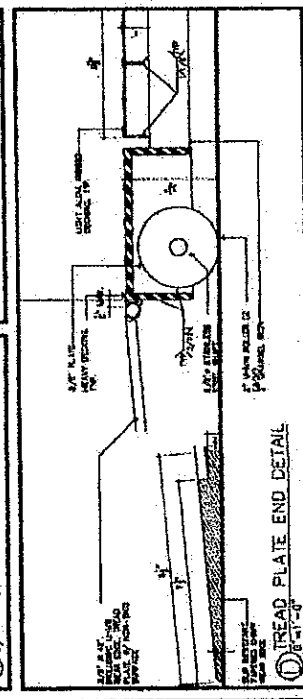
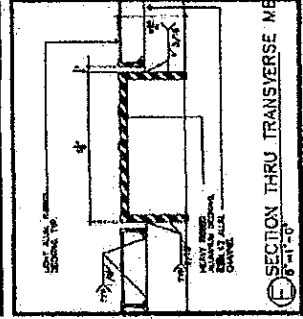
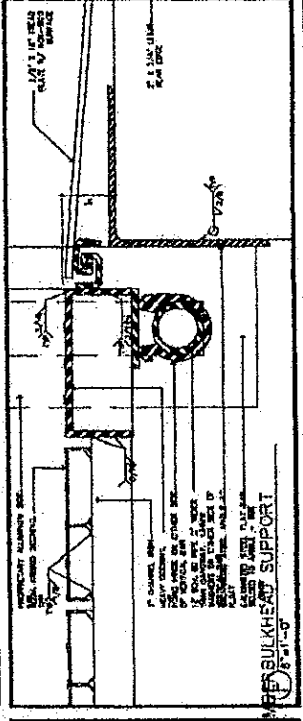
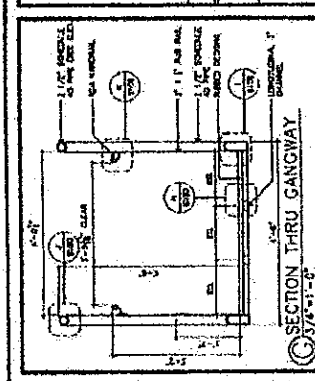
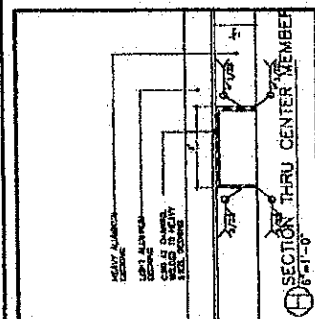
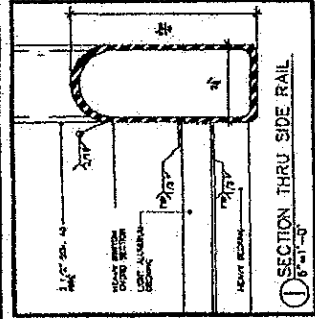
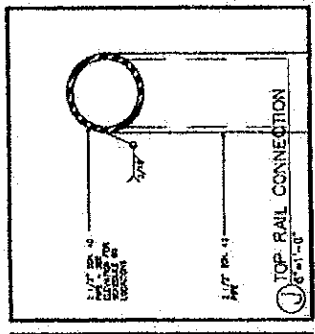
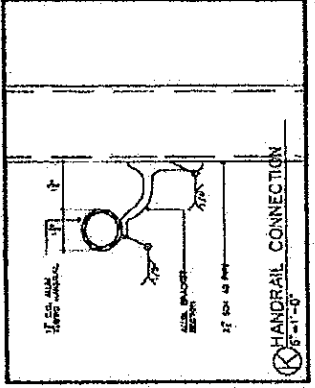
WEST HANLEY MARINE EQUIPMENT
1100 WEST HANLEY AVENUE
ST. LOUIS, MISSOURI 63104
PHONE: 314-241-1100
WWW.WESTHANLEYMARINE.COM

S100 GANGWAY DETAILS 1

SUPERIOR DOCK
 430 ORIENTAL BLDG BLDG
 ELLENBORO, LAKE CHARLES
 LA 70001
 504-237-0844
 504-237-0845
 WWW.SUPERIORDOCK.COM

ATLANTIC ENGINEERING
 1000 N. W. 10TH AVE
 MIAMI, FL 33136
 305-575-1211
 WWW.ATLANTIC-ENG.COM

NOTES:
 1. ALL DIMENSIONS UNLESS OTHERWISE NOTED.
 2. ALL MATERIALS SHALL BE AS SPECIFIED IN THE CONTRACT DOCUMENTS.
 3. ALL CONNECTIONS SHALL BE AS SHOWN UNLESS OTHERWISE NOTED.
 4. ALL WELDS SHALL BE AS SPECIFIED IN THE CONTRACT DOCUMENTS.
 5. ALL DIMENSIONS SHALL BE TO FACE UNLESS OTHERWISE NOTED.



90 FOOT GANGWAY

REVISION

S100

DATE: 10/15/10
 DRAWN BY: JMM
 CHECKED BY: JMM

ATLANTIC ENGINEERING